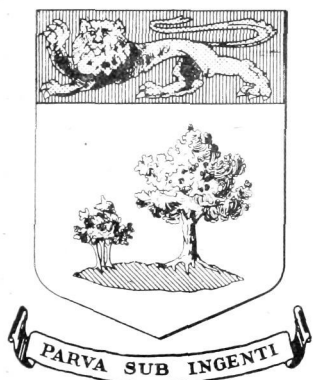


## Provincial Coats-of-Arms and Emblems—Concluded

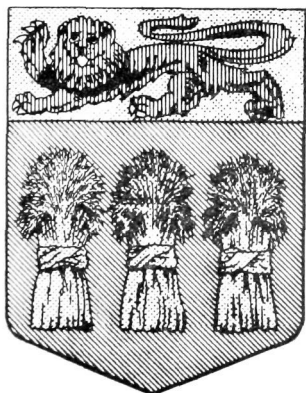


### PRINCE EDWARD ISLAND

Granted by Royal Warrant dated May 30, 1905.

*Description.*—"Argent on an Island Vert, to the Sinister an Oak Tree fructed, to the Dexter thereof three oak Saplings Sprouting all Proper, on a Chief Gules a Lion passant guardant Or."

*Motto.*—"Parva sub ingenti" (The small under [the protection of] the great).



### SASKATCHEWAN

Granted by Royal Warrant dated Aug. 25, 1906.

*Description.*—"Vert three Garbs in fesse Or, on a Chief of the last a Lion passant guardant Gules."

*Floral Emblem.*—Prairie Lily (c. 8, 1941).



### ALBERTA

Granted by Royal Warrant dated May 30, 1907.

*Description.*—"Azure in front of a Range of Snow Mountains proper, a Range of Hills Vert, in base a Wheat-field surmounted by a Prairie both also proper, on a Chief Argent a St. George's Cross."

*Floral Emblem.*—Wild Rose (c. 38, 1930).